

## How to make USB-disk as iBSG/NetFi installation media.

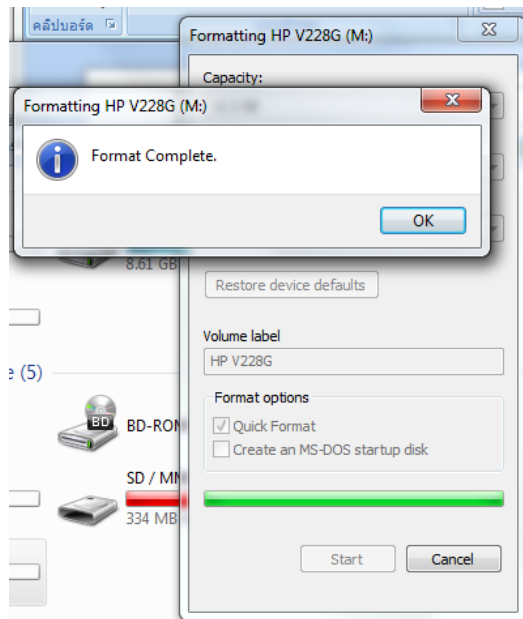
### Perquisites

- ISO2USB Version 0.7 ( <https://sourceforge.net/projects/iso2usb/files/latest/download> )
- iBSG/NetFi Latest ISO image ( <http://ibsg.nvk.co.th/download/testing/Thebox> )

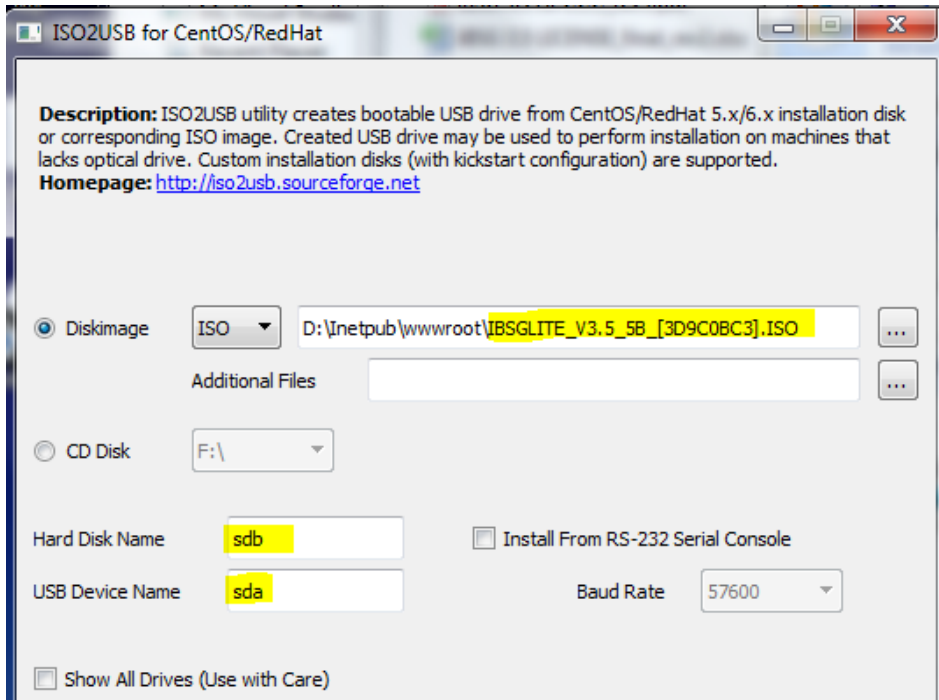


- USB Compatible kick-start file for iBSG/NetFi ( default.cfg )
- USB-Drive with at least 1GB space.

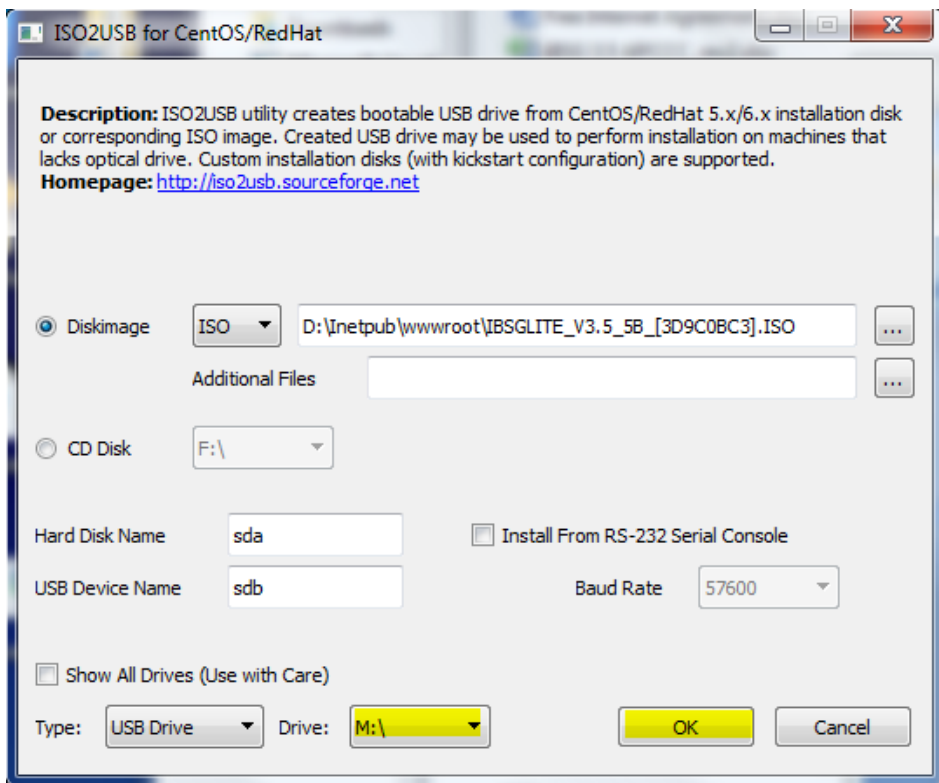
1. Insert USB thumb-drive to your PC and format it with quick mode. (FAT 32)



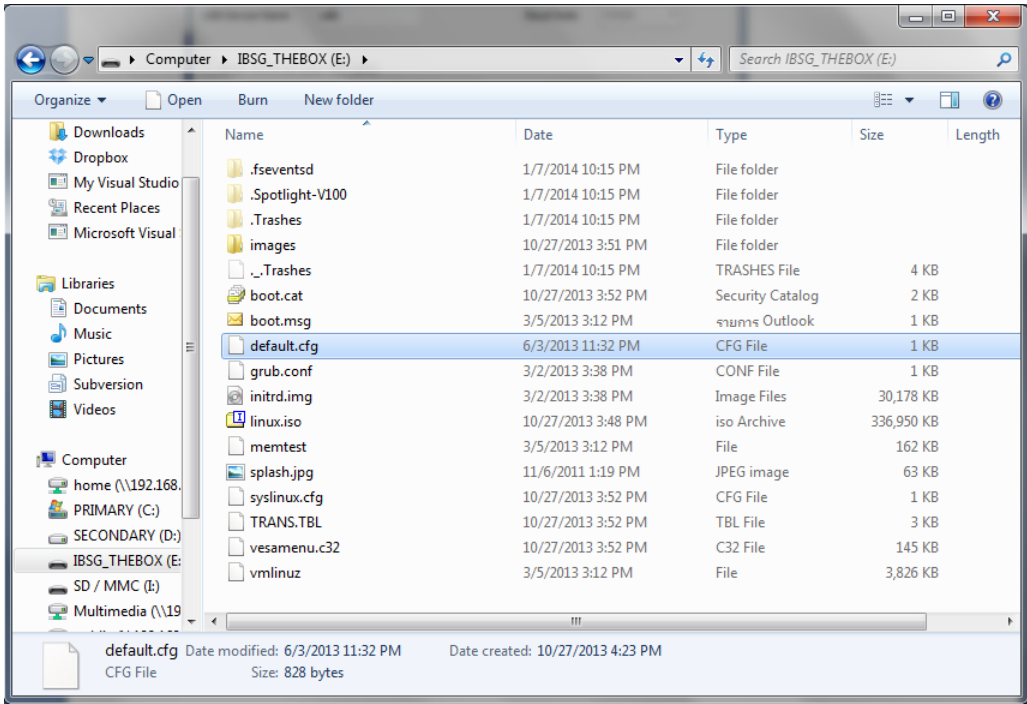
2. Run ISO2USB and browse for iBSG/NetFi ISO file, change 'Hard Disk Name' to **sdb** and 'USB Device name' to **sda**



3. Select target USB-drive path and click 'OK', wait until program finish its 4th step then click 'exit' button.



4. Copy USB Compatible kick-start file called '**default.cfg**' and to top level of USB drive.



**USB-Drive is now ready to be use as iBSG's alternative installation media.**